



上海三菱电梯有限公司
SHANGHAI MITSUBISHI ELEVATOR CO.,LTD.

400-820-3030
www.smec-cn.com

Printed in Aug. 2020

上海三菱电梯
SHANGHAI MITSUBISHI ELEVATOR



菱珑

LEON-II

Prime · Villa Elevator

With the development of the elevator industry over the past 150 years, traction has been proved to be “the only reasonable solution”.

Compared with other drive modes, traction is optimized and more advanced, thus providing customers with a comfortable, energy-saving, low-noise, safe, eco-friendly and easy-to-maintain experience.



Superior Experience

- More advanced traction mode to provide customers with a comfortable and smooth ride experience
- System-level mute design produces low-noise during elevator operation, creating a quiet living space
- Oil free design: No oil leak, no oil smell; green and eco-friendly
- Multiple patented technologies to reduce energy consumption and simplify maintenance



Intelligent Technology

- AI pre-diagnosis service enables predictive maintenance of elevators
- Smart appliances add varieties to elevators
- Smart elevator management App increases the convenience of elevator management
- The 24-hour intelligent and comprehensive self-check guarantees healthy operation of the system



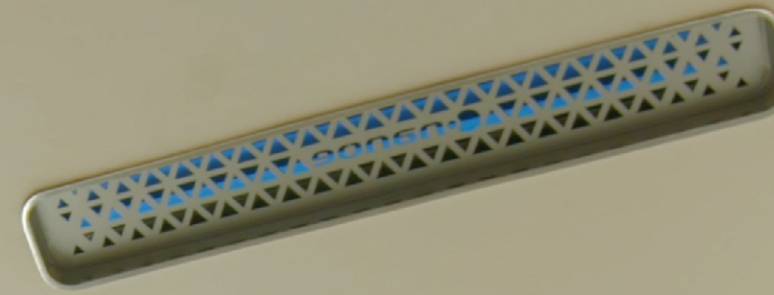
Safe and Reliable

- Designed and manufactured as per GB/T21739
- Standard remote service system to realize remote elevator care and automatic fault alarm
- Dozens of standard safety features, and several optional safety configurations
- Emergency plans for different emergency situations including power outage, fire, and pit flood



Excellent Design

- Car design of various styles to match different home environments
- Superior car decoration with carefully selected materials manufactured according to strict industry standards
- Quick and easy car installation with decorated car walls
- A complete set of interactive human-machine parts



LEON-II

Prime · Villa Elevator

Superior Experience P.03

Intelligent Technology P.07

Well-designed Human-machine Parts P.12

Integrated Car Design P.14

FLUOR™ P.15

JANE™ P.18

Classic Elegance P.19

Oriental Charm P.20

Simple Luxury P.21

Classic Comfort P.22

Parts and Materials P.23

Hoistway Layout P.26

Features P.27

Service Commitment P.30

Superior Experience

Not Hydraulic-driven

No oil leak or oil smell!

Not Screw-driven

Low noise, small vibration, fast speed!

Not Winch

Comfortable, low-noise, less energy consumption,
and longer service life of wire ropes!



Advanced Technology

New Customized PM Synchronous Gearless Traction Machine

Ultra Quiet: Use of gearless traction machine and no additional mechanical drive structure to create superior performance and low noise, with less than 50dB(A) noise during no-load operation.

Free of Lubricants: No complicated lubrication system to prevent environmental pollution.

Patented High-performing Guidance System

Self-adaptive: Adjust the operation posture according to the state of guiderails to ensure smooth and comfortable operation.

Free of Lubricants: Prevent oil pollution in the installation and operation environment to ensure a clean home environment.

Long-holiday Shutdown: The guidance system considers the "long-holiday shutdown" requirement of home elevators, and thus can quickly return to the best working position after a "long-holiday shutdown".

Quiet and Comfortable

System-level Low Noise Design to Create a Quiet Home Environment

All within the Hoistway

The traction machine and the control cabinet are positioned within the sound-proof hoistway to deaden the noise created by elevator operation

Low-noise Design of the Traction Machine and Brakes

Traction machine noise under no load: Less than 50dB(A) (national standard: 62dB(A) or less)

Brake noise: Less than 50dB(A) (national standard: 70dB(A) or less)

Noise Reduction Measures of the Control Cabinet

Low-noise contactors and damping materials to deaden the noise of contactors

Rational design of air ducts to greatly reduce the noise of fans during working

Low-noise Door Operator

Low-noise control of door opening and closing; smart adjustment of door opening and closing torque; smooth, quiet and safe door opening and closing

Prime Service

Optional

Warranty of Wire Ropes

Upon the expiry of the warranty, SMEC continues to provide eight-year premium warranty and lifetime prime warranty services.

Superior Experience

Free Layout

aFCfgvA

New-generation machine-room-less elevator system.

Smaller space and more flexible layout to perfectly suit the requirements of home elevators.

thang máy gia đình

Space-saving , Safe and Secure

As the control cabinet is installed within the hoistway, the impact of elevator parts on home decoration is minimized, live parts are absolute isolated from users, and there is more space.

Ultra-thin Control Cabinet

Reduce radiation and noise as well as the impact on space utilization and wall structure.

Compact Emergency Operating Device

Developed by SMEC, it takes up very small space and is easy to operate for rescue, giving the decoration of the building a nicer look.

Fewer Restrictions on Building Design, Fewer Modifications

Save architectural space and reduce building construction cost; make the best use of the architectural space and give building designers more freedom.

Low Overhead

Minimum overhead 2850 mm fits the requirements for floor height of most villas.

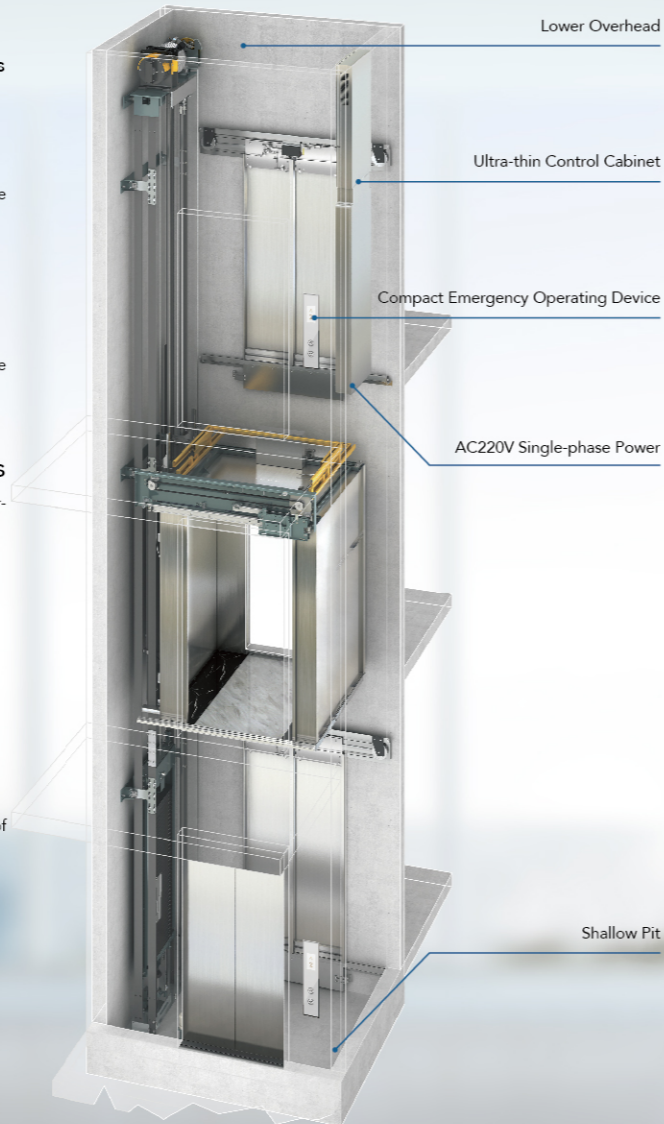
Shallow Pit

Minimum pit depth 320 mm is equivalent to the height of two steps.

Household Grid, Energy Efficiency

AC220V Single-phase Power

Applicable to household grid; the power of the traction machine is only 1.1kW, equivalent to that of common household appliances.



Multiple Protection

Elevator Operation Protection

- The speed detector monitors the speed and position of the elevator all the time.
- The control system detects the current, voltage and temperature of the motor.
- Independent of the software system, safety switches cut off the safety circuits in case of exceptions.
- The monitoring device of wire rope running state stops the elevator when a wire rope breaks.
- Independent of the electrical system, the safety gear protection system and the buffer protection system are activated when the elevator runs abnormally.

Elevator Braking Protection

- Apply double-brake redundancy protection, with the braking torque of a single brake up to more than 1.25 times of the rated torque.
- The elevator detects the braking torque automatically at regular intervals to identify any risk when the braking torque has a minor anomaly.
- When the braking force is insufficient, short connect the three-phase winding of the PM traction machine to keep the elevator speed within 0.15 m/s.

Door Opening and Closing Protection

- Besides MBS, safety edges are equipped to provide double protection for passengers coming in and out of the elevator.
- Hall door lock switch, car door lock switch and door open & close position switch to detect the door opening and closing state.

High-reliability Design and Selection of Parts

- Breakers, contactors, power modules and other main electrical parts of LEON-II elevators are made by famous brands and thus their quality is ensured.
- Important safety parts not only meet the requirements of GB/T 21739 standard, but also are designed as per GB7588 standard.



Emergency Plan

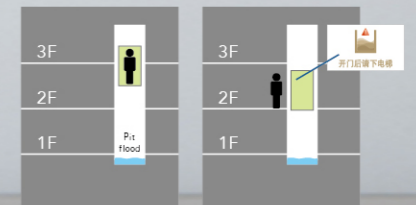
Optional

Mitsubishi Emergency Landing Device (MELD)

In case of power outage, the elevator will be powered by emergency power supply and stop at the nearest floor slowly, and open doors to let passengers out.

Pit Flood Alarm

When the detection switch in the pit detects water in the pit exceeding a certain level, the elevator will stop at the nearest floor and open doors to let passengers out. A float ball is also available to detect the water level. If the safe water level is exceeded, an alarm will go off and the elevator stop.



Intelligent Technology



Water Ion Fan

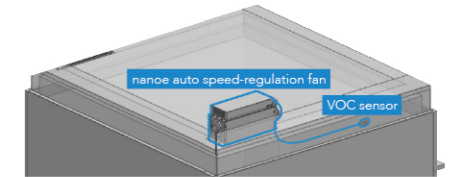


Cleaner

nanoE™ water ion generator is installed to suppress attached bacteria. High-sensitivity VOC sensors are equipped to enable the fan to switch to the maximum speed to quickly dilute the smell when smoke or unpleasant smell is detected.

More Humane

The fan speed can be adjusted according to the load. The fewer the passengers are, the smaller the speed is and the quieter the fan is. The speed can also be adjusted from mobile App.



Introduction to nanoE™

- nanoE™ is the technology which can denature the protein of the attached bacteria and thus suppress the bacteria through particle ions covered by water. According to SGS, the nanoE™ test for 8 hours in a 23 m3 lab has proved that nanoE™ can suppress up to 99.97% of Staphylococcus aureus. (SGS No: SHES160600431172-2)
- nanoE™ and nanoE™ label is the trademark of Panasonic Corporation.

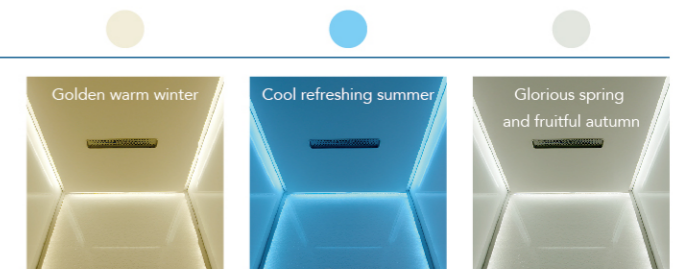
Smart Lighting



Smart Light Color

LEON-II FLUOR™ cars are equipped with smart lighting, which can change the light color and the preset ambiance according to the family's preference and the season respectively from mobile App.

- Adjust the luminance in the car
- Adjust the light color in the car
- Pre-set the light switch mode



Intelligent MBS

- With more accurate photo eyes and more intensive beams, provide better protection for passengers when they enter the door zone of the elevator.
- Intelligently monitor whether the door is closed and avoid the danger caused by short connection of the door lock switch of the door operator.
- Replace conventional on-off signal communication with pulse communications to prevent missing the detection of an MBS fault.
- Apply an intelligent mode of door operator PCB and MBS dialogue and self-test, and take proper measures to avoid risks every time when the elevator closes the door.



Intelligent Technology

Remote Monitoring



Intelligent Data Transfer Channel

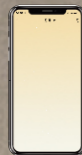
- Use a digital solution to integrate the remote monitoring function with the digital multiparty call function, and provide optional functions including intelligent use and management of elevators; very scalable and future-fit.
- Core devices use high-performance ARM architecture; the center of the data transfer network supports the public and private APN network access.

Elevator Management App

EleCare

Makes the Management of Elevators More Convenient

Users can adjust and switch on/off electrical parts and common subdoor functions from the App, including car fan, lighting and emergency number setting



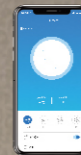
General Lighting



Smart Light Smart Lighting



Smart Color Smart Lighting



Water Ion Fan



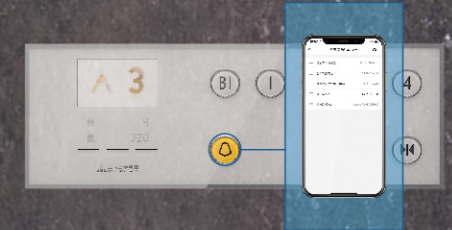
Subdoor Function

One-touch Dial



Home elevators usually do not have a control room and conventional digital communication system cannot produce an effective call for help. LEON-II uses DigTel-II intelligent data transfer channel and VoIP to achieve one-touch dial. In case of an emergency, users can communicate with the outside by pressing the alarm button on the operating panel only, which is safer and securer.

- Set the phone number from mobile App
- Dial five phone numbers by turns to avoid busy line



Child safety lock button



At home, children and pets may touch the call buttons by mistake, which may involve safety risks, so fingerprint authentication right is added to the fingerprint child safety lock button to prevent children and pets from entering the car alone and avoid safety risks.

- Easy to use: Enter and delete fingerprints with one click
- Safe and reliable: Prevent misoperation by children and pets through fingerprint mapping
- Function switchover: Enable and disable the fingerprint function through a key switch
- Large capacity storage: The fingerprint database can store 500 fingerprints at the same time



Well-designed Human-machine Parts

"Gold Inlaid with Jade" Design

Edges lined with metal

Mirror-finish metal strips not only improve the quality of products, but also protect the central panel.

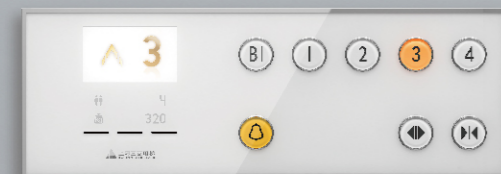
Embedded Ultra-white Panel

The central ultra-white panel has a jade texture that makes people want to touch, without the ice-cold feeling of stainless steel.



4.3" TFT LCD Horizontal Operating Panel

All floor buttons on the horizontal operating panel are at the same horizontal line (900 mm), meeting the height requirements of the elderly and children.



ZCB-RA10

4.3" TFT LCD Hall Call



ZPI-CA11

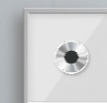
ZPIA40-CA11

Single Button

In many cases, only one elevator is used in the home environment, thus it is unnecessary to allocate the elevator up or down. One button can meet the call requirements.



ZHB-C011



ZHBA40-CA11

B02: Φ35mm, Orange light when mechanical latching, Resin button cap

A40: Φ35mm, White Light when Touching, Glimmering on standby, Stainless steel surface, Fingerprinting

A11: Φ35mm, White Light when Mechanical Latching, Glimmering on Standby, Stainless steel surface

A12: Φ35mm, Orange Light when Mechanical Latching, Glimmering on Standby, Stainless steel surface

A14: Φ35mm, White Light when Mechanical Latching, Glimmering on Standby, Stainless steel surface, Raised Character and Braille

A15: Φ35mm, Orange Light when Mechanical Latching, Glimmering on Standby, Stainless steel surface, Raised Character and Braille

Standard Button



B02

Optional Button



A40



A11



A12



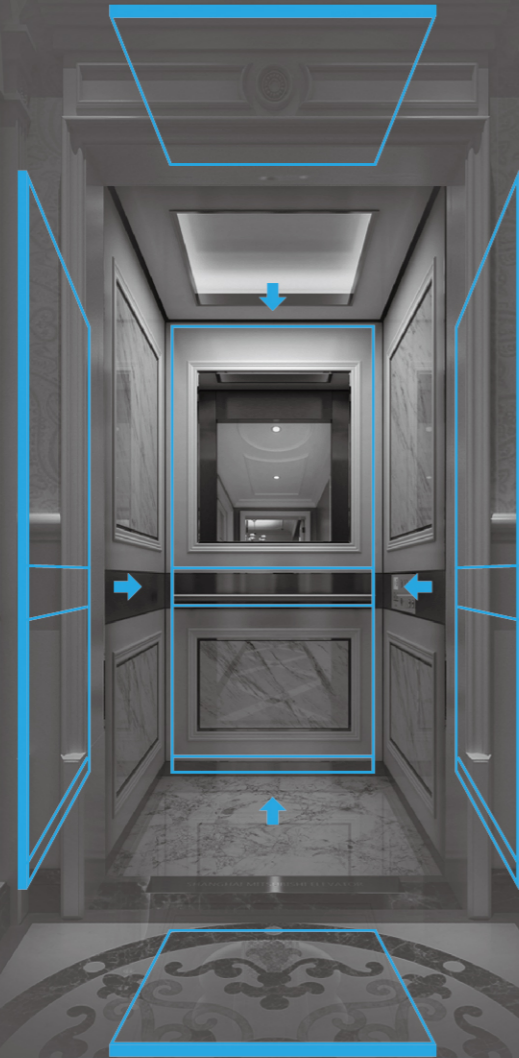
A14



A15



Integrated Car Design



Different Styles

New LEON-II home elevators, crafted by professional design teams of SMEC according to “home” standards, are a perfect blend of functionality and beauty and provide a one-stop solution of elevators and original decoration. The car is designed as a whole and looks beautiful without vertical splicing.

We have explored the prevailing styles and trends, and developed 6 styles and 12 types of cars available for selection.

FLUOR™, JANE™, Classic Elegance, Oriental Charm, Simple Luxury, Simple Comfort

Original Decoration

One-stop Installation

Car walls of the integrated car are decorated, thus secondary decoration is not required on site. Installation personnel only needs to fix the car walls, saving both time and labor and shortening the installation cycle.

Full Lifecycle Quality Control

Maintain the superior quality of SMEC products and follow strict quality management process at each stage to ensure superior original decoration.

Safe and Secure

Safe and Eco-friendly Materials

Materials for the integrated car are selected according to the demanding requirements for home decoration: All materials have passed the rigorous reliability test of SMEC and are eco-friendly and safe.

Comply with the National Home Elevator Standards

The design basis of all products shall meet the requirements of GB/T 21739, and other applicable standards and regulations.

Notes:

1. Other models of floorings and handrails are available; other types of materials for the front return panel, transom panel and car door are also available. See the material mapping table for details.
2. Front return panel and car door are recommended configurations and not included in the integrated car.



Original Decoration



Quality Assurance



Time and Labor Saving



Safe and Secure

FLUOR™ Clean Future



ZCD-034T 纯晶庭



Scan the QR code to view the image of the car

- Ceiling
ZCL-SS09
- Rear Wall
Diamond Lattice Resin Board
- Side Wall
Glossy-finish Pure White Steel Sheet
- Handrail
ZYH-RP01 Acrylic Round Handrails at Two Sides
- Flooring
ZRZ-A03Y Welcome Message at the Entrance
- Fan
Nanoe Water Ion Fan (Standard)
- Ambient Lighting
Fluorescent Smart Lighting (Standard)
- Car Music
Follow the Smart Lighting Mode (Standard)
- Front Return Panel and Car Door
Random-pattern Stainless Steel
- Transom Panel
Random-pattern Stainless Steel

FLUOR™ Simple Luxury



ZCD-035T 润雅庭



Scan the QR code to view the image of the car

- Ceiling
ZCL-SS09
- Rear Wall
Jade Light-sensitive Safety Glass
- Side Wall
Light Walnut Woodgrained Steel Sheet
- Handrail
ZYH-RP01 Acrylic Round Handrails at Two Sides
- Flooring
ZRZ-A03Y Welcome Message at the Entrance
- Fan
Nanoe Water Ion Fan (Standard)
- Ambient Lighting
Single-color Warm Light (Standard), Fluorescent Smart Lighting (Optional)
- Car Music
Follow the Smart Lighting Mode (Optional)
- Front Return Panel and Car Door
Random-pattern Yellow Titanium Stainless Steel
- Transom Panel
Random-pattern Yellow Titanium Stainless Steel

FLUOR™ Modern Chinese



ZCD-036T 浅山庭



Scan the QR code to view the image of the car

Ceiling

ZCL-SS09

Rear Wall

Distant-hill Light Sensitive Safety Glass

Side Wall

Dark Teak Woodgrained Steel Sheet

Handrail

ZYH-RH05 Stainless Steel Bronze-titanium Fingerprint-proof Round Handrail at two Sides

Flooring

ZRZ-A04Y Welcome Message at the Entrance

Fan

Nanoe Water Ion Fan (Standard)

Ambient Lighting

Single-color Warm Light (Standard), Fluorescent Smart Lighting

Car Music

Follow the Smart Lighting Mode (Optional)

Front Return Panel and Car Door

Random-pattern Bronze-titanium Stainless

Transom Panel

Random-pattern Bronze-titanium Stainless Steel

JANE™ Simple Stylish



ZCD-037T 星汇庭



Scan the QR code to view the image of the car

Ceiling

ZCL-GS18

Rear Wall

Mirror-finish Sandblasted Champagne Gold Plated Stainless Steel

Side Wall

Transverse Linen-finish Steel Sheet

Handrail

None

Flooring

ZRZ-A03Y Welcome Message at the Entrance

Front Return Panel

Random-pattern Champagne Gold Plated Stainless Steel

Car door

Random-pattern Champagne Gold Plated Stainless Steel

Transom Panel

Random-pattern Champagne Gold Plated Stainless Steel

Integrated Car Design



Classic Elegance



ZCD-028T 天海庭

- Ceiling
ZCL-GS18
- Rear Wall (Top)
Red Lacquer Wood Finish and Wood Lines at Four Sides and Central Side Mirror
- Rear Wall (Top) and Side Wall (Top, Bottom)
Red Lacquer Wood Finish and Wood Lines at Four Sides
Central Globular Rosewood Finish
- Girdle
Hairline-finish Bronze-titanium Stainless Steel
- Handrail
ZYH-RH05
Hairline-finish Bronze-titanium Stainless Steel
- Flooring
ZSC-011Y Welcome Message at the Entrance
- Front Return Panel and Car Door
Hairline-finish Bronze-titanium Stainless Steel



Scan the QR code to view the image of the car



ZCD-029T 香榭庭

- Ceiling
ZCL-GS18
- Rear Wall (Top)
White Lacquer Wood Finish and Wood Lines at Four Sides; Central Side Mirror
- Rear Wall (Top) and Side Wall (Top, Bottom)
White Lacquer Wood Finish and Wood Lines at Four Sides
- Girdle
Hairline-finish Rosy Golden Titanium Stainless Steel
- Handrail
ZYH-RH05
Hairline-finish Bronze-titanium Stainless Steel
- Flooring
ZSC-028Y Welcome Message at the Entrance
- Front Return Panel and Car Door
Hairline-finish Rosy Golden Titanium Stainless Steel



Scan the QR code to view the image of the car



ZCD-031T 华韵庭

- Ceiling
ZCL-GS17
- Rear Wall (Top, Bottom)
Mirror-finish Etched Yellow Titanium Stainless Steel
- Girdle
Short-threaded Hairline-finish Yellow Titanium Stainless Steel
- Side Wall (Top, Bottom)
Noble Cherry Woodgrained Refractory Panel
- Handrail
ZYH-RH05
Hairline-finish Yellow Titanium Stainless Steel
- Flooring
ZSC-029Y Welcome Message at the Entrance
- Front Return Panel and Car Door
Hairline-finish Yellow Titanium Stainless Steel



Scan the QR code to view the image of the car



ZCD-033T 华韵庭

- Ceiling
ZCL-GS17
- Rear Wall (Top, Bottom)
Mirror-finish Etched Rose Gold titanium Stainless Steel
- Girdle
Hairline-finish Rose Gold Titanium Stainless Steel and Strips
- Side Wall (Top, Bottom)
Transverse Cherry Woodgrained Refractory Panel
- Handrail
ZYH-RH05
Hairline-finish Rose Gold Titanium Stainless Steel
- Flooring
ZSC-029Y Welcome Message at the Entrance
- Front Return Panel and Car Door
Hairline-finish Rose Gold Titanium Stainless Steel



Scan the QR code to view the image of the car



Oriental Charm

Integrated Car Design



Simple Luxury



ZCD-030T 尚品庭

- Ceiling
ZCL-GN06
- Rear Wall (Top, Bottom)
Decorated Glass
- Girdle
Hairline-finish Rose Gold Titanium Stainless Steel
- Side Wall (Top, Bottom)
White Leather Refractory Panel
- Handrail
ZYH-RH05
- Hairline-finish Rose Gold Titanium Stainless Steel
- Flooring
ZSC-028Y Welcome Message at the Entrance
- Front Return Panel and Car Door
Hairline-finish Rose Gold Titanium Stainless Steel



Scan the QR code to view the image of the car

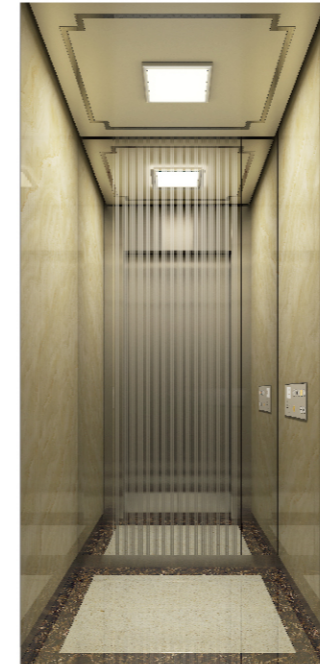


ZCD-032T 尚品庭

- Ceiling
ZCL-GN06
- Rear Wall (Top, Bottom)
Decorated Glass
- Girdle
Hairline-finish Rose Gold Titanium Stainless Steel
- Side Wall (Top, Bottom)
Coffee Linen-finish Refractory Panel
- Handrail
ZYH-RH05
- Hairline-finish Rose Gold Titanium Stainless Steel
- Flooring
ZSC-028Y Welcome Message at the Entrance
- Front Return Panel and Car Door
Hairline-finish Rose Gold Titanium Stainless Steel



Scan the QR code to view the image of the car



ZCD-026T 御水庭

- Ceiling
ZCL-SN04
- Rear Wall (Center)
Mirror-finish Etched Stainless Steel
- Rear Wall (Two Sides)
Mirror-finish Stainless Steel
- Side wall
Laminated Steel Sheet
- Handrail
None
- Flooring
ZPH-028
- Front Return Panel and Car Door
Hairline-finish Stainless Steel



Scan the QR code to view the image of the car



ZCD-027T 和枫庭

- Ceiling
ZCL-SN04
- Rear Wall (Center)
Mirror-finish Brushed Stainless Steel
- Rear Wall (Two Sides)
Mirror-finish Stainless Steel
- Side wall
Laminated Steel Sheet
- Handrail
None
- Flooring
ZPH-031
- Front Return Panel and Car Door
Hairline-finish Stainless Steel



Scan the QR code to view the image of the car



Simple Comfort

Parts and Materials

Ceiling



ZCL-SN04

Central milky white lighting panel; steel painted ceilings at all sides and mirror-finish stainless steel decoration strips.

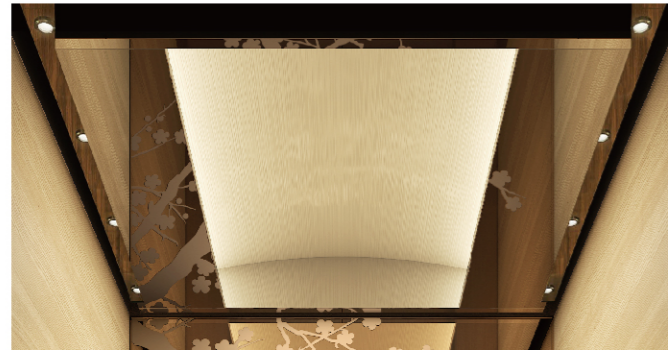
Central direct lighting, ceiling thickness: 50 mm



ZCL-GS18

Ceilings at four sides and painted steel sheet; mirror-finish titanium stainless steel frames.

Central floodlights, ceiling thickness: 200 mm



ZCL-GS17

Mirror-finish stainless steel sheet at two sides; central arch floodlights.

Ceiling thickness: 200 mm



ZCL-GN06

Mirror-finish titanium stainless steel ceiling; downlights and direct lighting.

Ceiling thickness: 200 mm

ZCL-CN01 Bare Ceiling

Ceiling Thickness: 100 mm

Ceiling materials and lighting method by local.

ZCL-CN08 Bare Ceiling

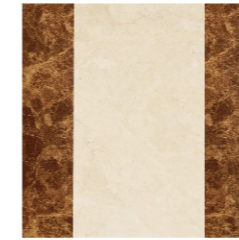
Ceiling Thickness: 200 mm

Ceiling materials and lighting method by local.

PVC Parquet Flooring



ZPH-028



ZPH-026

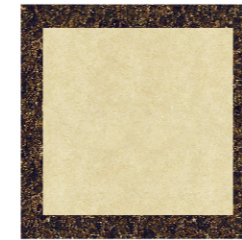


ZPH-029

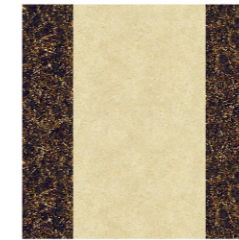


ZPH-031

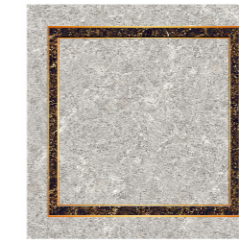
Marble Parquet Flooring



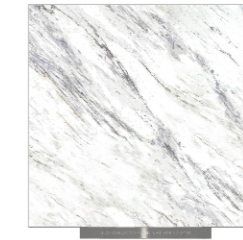
ZSC-011



ZSC-013



ZSC-014



ZSC-028Y *



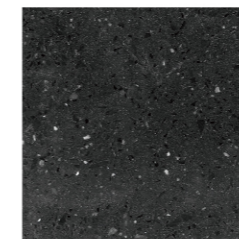
ZSC-029Y *

Note *: "Y" in the model of marble parquet flooring refers to the flooring with welcome message.

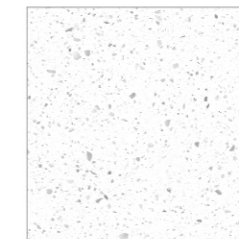
Artificial Stone Flooring



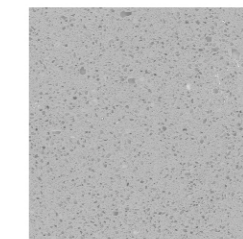
ZRZ-A01



ZRZ-A02



ZRZ-A03



ZRZ-A04

Hall Door and Door Jamb



* Materials of the hall door is replaceable.

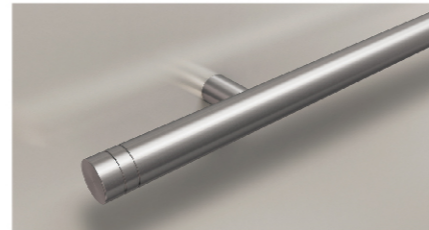
E-102



* Materials of the hall door is replaceable.

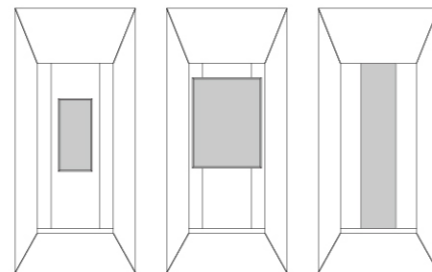
E-302

Handrail



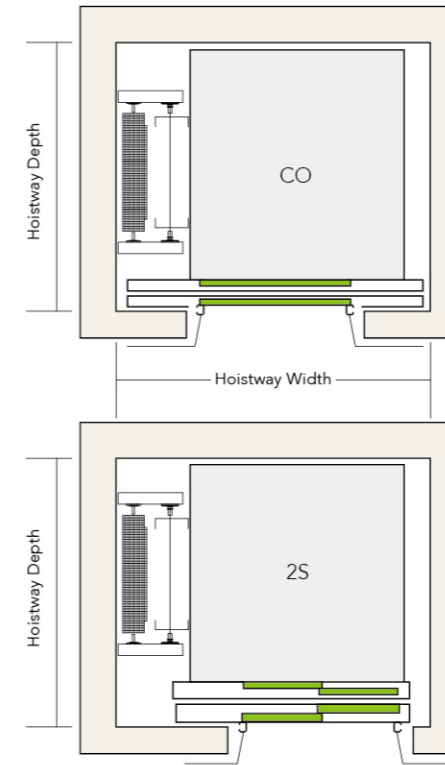
ZYH-RH05 Round Stainless Steel Handrail

Mirror

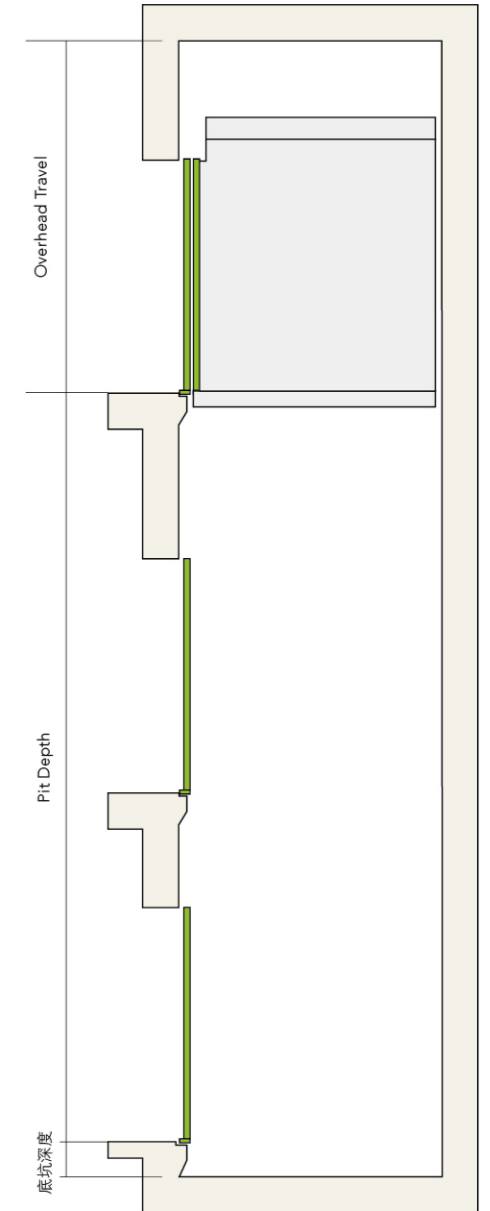


Stainless Steel Mirror Half-length Mirror Full-length Mirror

Hoistway Plan



Hoistway Elevation



Materials Mapping Table

Item	Specification	Applicability	Remarks
Car Wall and Car Door	Painted steel sheet	Standard	
	PPS steel sheet/Laminated steel sheet, metallic painted steel sheet, hairline-finish stainless steel, hairline-finish titanium stainless steel, hairline-finish etched stainless steel, hairline-finish etched titanium stainless steel, mirror-finish stainless steel, mirror-finish titanium stainless steel, mirror-finish etched stainless steel, mirror-finish etched titanium stainless steel, random-pattern stainless steel, random-pattern titanium stainless steel, random-pattern etched stainless steel, random-pattern etched titanium stainless steel, sand-pattern stainless steel, sand-pattern titanium stainless steel, sand-pattern etched stainless steel, sand-pattern etched titanium stainless steel	Optional	
Mirror	None; stainless steel mirror, half-length mirror, full-length mirror	Optional	Not applicable to integrated car
Handrail	ZYH-RH05 Round stainless steel handrail; front handrail, side handrail	Optional	
		Standard	
Flooring	Real stone flooring	Standard	
	Parquet flooring, marble flooring	Optional	
Hall Door	Painted steel sheet	Standard	
	PPS steel sheet/Laminated steel sheet, metallic painted steel sheet, hairline-finish stainless steel, hairline-finish titanium stainless steel, hairline-finish etched stainless steel, hairline-finish etched titanium stainless steel, mirror-finish stainless steel, mirror-finish titanium stainless steel, mirror-finish etched stainless steel, mirror-finish etched titanium stainless steel, random-pattern stainless steel, random-pattern titanium stainless steel, random-pattern etched stainless steel, random-pattern etched titanium stainless steel, sand-pattern stainless steel, sand-pattern titanium stainless steel, sand-pattern etched stainless steel, sand-pattern etched titanium stainless steel	Optional	
Door Jamb	Painted steel sheet	Standard	
	PPS steel sheet/Laminated steel sheet, metallic painted steel sheet, hairline-finish (titanium) stainless steel, mirror-finish (titanium) stainless steel, random-pattern (titanium) stainless steel, sand-pattern (titanium) stainless steel	Optional	

Item	Specification		
Rated Speed (m/s)	0.4		
Rated Capacity (kg)	320	400	
Rated Number of Passengers (Persons)	4	5	
Hoistway Dimensions	CO	1480×1400 【Minimum】	1760×1400 【Recommended】
	2S	1350×1400 【Minimum】	1520×1450 【Recommended】 1700×1450 【Recommended】
Car dimensions Inner width × Inner depth(mm) *1	900×1100		1100×1100
Travel 【Maximum】 (m)	15 *2		
Number of Floors 【Maximum】	6		
Overhead 【Minimum】 (mm)	2850		
Pit depth 【Minimum】 (mm)	320		

Notes:

- *1. For the range of car dimensions for "(minimum) hoistway dimensions" and other dimensions, see the standard building construction drawing LEON-II-S02 and obtain technical confirmation.
- *2. For "(recommended) hoistway dimensions, the car space and the clear entrance width will be greater. For "(minimum) hoistway dimensions, modifications of building construction may be involved.
- *3. Allowable positive deviation of "hoistway dimensions": 0 to 25 mm. If the dimensions in the above table are exceeded, please consult our local agents through our service center at 400-820-3030.
- *4. If doors are to be open at both side or if the dimensions exceed the (maximum) (minimum) dimensions, please consult our sales agent and develop a customized solution.

Features

● Standard ○ Optional

Feature	Description	Code	IC-28C
■ Control and Safety Features			
Anti-Stall Timer	When the hoisting rope slips or when the motor stalls and this lasts for a preset period of time, the elevator will stop.	AST	●
Balance Coefficient Automatic Detect	In Auto mode, after a certain period of time, when the elevator enters the standby mode, the brake is released and the elevator does not move. Measure the motor current to calculate the balance coefficient. If the coefficient deviates too much, then stop the elevator.	BCST	●
Brake Redundancy Protection	When one group of brakes fails, other brakes can effectively stop the elevator.	BTUP	●
Car Slide Safety Protection	When the car slides due to insufficient braking force, within the scope that the power elements can cope, short the three-phase winding of PM traction machine to reduce the speed the car slides.	CSSP	●
Double-Side Static Torque Detect (Manual)	Enter the Double-Side Static Torque Detect (Manual) mode manually. The elevator keeps all brakes in holding state and applies a torsional torque onto the PM traction machine to check the static torque.	DBSD-M	●
Double-Side Static Torque Detect (Power-on)	In auto mode, when the elevator is powered on in case of power outage or after the control PCB is reset, the elevator keeps all brakes in holding state and applies a torsional torque onto the PM traction machine to check whether the double-side static torque meets the requirement.	DBSD-O	●
Double-Side Static Torque Detect (Periodic)	In auto mode, after a certain period of time, when the elevator enters the standby mode, the elevator keeps all brakes in holding state and applies a torsional torque onto the PM traction machine to check whether the double-side static torque meets the requirement.	DBSD-P	●
Door Interlock Short Safety Protection	In auto mode, if the door interlock switch is detected shorted, stop the elevator to protect passengers.	DSSP	●
Electrical Safety Circuit Protection	If any electrical safety device functions, the elevator will stop.	ESC	●
Floor Height Measuring	Measure and record the data of floor height automatically.	FMR	●
Inspection Operation	Inspection operation mode for maintenance staff.	INSP	●
Load Weighing Start	The elevator adjusts the starting torque according to the load in the car to enable the elevator to start steadily.	LWS	●
Over-current Protection	A function which stops the elevator when over-current is detected in the rectifier or inverter.	OCP	●
Over-speed Protection	A function which stops the elevator when the car travels at a speed over the allowed value.	OSP	●
Over-temperature Protection	A function which stops the elevator when the motor is detected overheated.	OTP	●
Over-voltage Protection	A function which stops the elevator when over-voltage is detected in the rectifier or inverter.	OVP	●
Power Failure Protection	A function which stops the elevator in case of faults like open phase, phase loss or under-voltage.	PFP	●
Reverse Service Protection	A function which stops the elevator when the elevator is found running reversely.	RSP	●
Selector Correcting	Correct the selector when the elevator is running.	SC	●
Safe Landing	When the elevator stops outside the door zone, the controller will perform safety detection. If the starting requirements are met, then the elevator will stop at the nearest floor with doors open.	SFL	●
Stop Open	The elevators will automatically open its doors after it stops.	SO	●
Inverter High-Temperature Detection	A function which stops the elevator when over-heat is detected in the inverter.	THMF	●
speed Protection	A function which stops the elevator when the car travels at a speed under the allowed value.	USP	●
■ Operational and Service Features			
Car Computer Back Up Operation	When the computer of the main operating panel, car top station or door operator has exceptions, the elevator stops at the nearest floor and cannot start again.	CCBK	●
Car Fan Shut Off-Automatic	The car fan will be automatically shut off to save energy after being on standby with no direction.	CFO-A	○
Car Fan Shut Off-Button	Shut off the fan through the buttons on the operating panel.	CFO-B	●
Car Light Shut Off-Automatic	The car light will be automatically shut off to save energy after being on standby with no direction.	CLO-A	○
Car Light Shut Off-Button	Shut off the light through the buttons on the operating panel.	CLO-B	●
Elevator Fault Diagnosis	Diagnose the exceptions and faults that occur when the elevator is running.	EFD	●
Alarm Button Test	To prevent the failure of the alarm button, remind the user to check whether the button functions properly at regular intervals..	EMBT	●
Elevator App Remote Operation	Complete the setting of electrical parts and some features that were done by the switches in the subdoor from the mobile App.	EVAC	●
False Car Call Canceling-Car Button Type	Cancel a wrong Car Call by pressing this button twice	FCC-P	○
Hall Computer Back Up Operation	When the hall computer has an exception, the elevator stops at the nearest floor and cannot start again.	HCBK *6	●
Maintenance Reminder	Display the maintenance reminder on the car information display when the elevator needs maintenance.	MR	○
No Start Alarm	When Hall Calls and Car Calls are registered but the elevator cannot start at the pre-set time, cancel the assigned Hall Calls but keep Car Halls. The exception light is on.	NST	●
Next Landing	When the elevator arrives at the destination floor, if the car door cannot be opened completely, the elevator will close the door and go down to the next floor until the door is opened completely, and then it returns to normal operation.	NXL	●
Overload Holding Stop	When the car is overloaded, the elevator keeps the door open and the buzzer in the car sounds.	OLH	●

● Standard ○ Optional

Feature	Description	Code	IC-28C
■ Emergency Operation Features			
Emergency Car Lighting	Provide car lighting in case of lighting power outage	ECL	●
Emergency Landing Device	This device provides power supply in case of power outage. The car will run to the nearest floor and keep the door open, and passengers can leave safely.	ELD *1	○
Emergency Bell	Press the alarm bell in case of emergency. The bell or the intercom device rings.	EMB	●
Fire Emergency Return	If the Fire Emergency Return switch works, cancel all Hall Calls and Car Calls. The elevator immediately returns to the specified floor and opens the door.	FER *2	○
Long Stay Reminder	If a passenger is detected in the car for a long time, the elevator will open doors and reminds the passenger to leave the car.	LTCA	○
Pit Flood Alarm	When the water in the pit exceeds the safe level, the elevator will land at the nearest floor.	PWIA	○
Elevator Remote Service System	Monitor the elevator operation in real time and sends any fault or exception to the service center via wireless network; develop a customized maintenance solution to provide value added services for customers.	REMES-II	●
■ Door Operation Features			
Light Beam Protection	Detect whether there are passengers in the car through multiple infrared light beams at the entrance, and open the doors immediately if there is any.	AMS *3	○
Door Close Protection	The door reverses and reopens when the car door cannot be closed completely.	CLTS	●
Door Reverse & Reopen	When the door is open, there are no Car Calls and Hall Calls forwards and Hall Calls in the opposite direction of this floor are registered, the elevator will reopen the door after closing.	DDOP *6	●
Door Load Detector	The elevator door will reverse and open or closed if the door cannot be opened or closed completely in case of overload.	DLD	●
Not Door Open Feature	Close the door immediately if the door cannot be opened.	DONG	●
Automatic Door -Open Time Adjustment	Automatically adjust the door-open time according to Hall Calls or Car Calls.	DOT	●
Expediting of Door Close	When the elevator stops and opens the door, press the Door Close Button. The door will be closed immediately.	EDC	●
Multi-beam Door Sensor	Safety edge with multi beams which provides double protection and reopens the door when passengers or objects are detected when the door is closing.	MBS *3	○
Repeated Door-close	Should an obstacle prevent the doors from closing, the doors will repeatedly open and close until the obstacle is cleared from the doorway.	RDC	●
Reopen with Hall Button	Closing doors can be reopened by pressing the hall button corresponding to the traveling direction of the car.	ROHB	●
■ Signal and Display Features			
Direction Arrows in Car	Indicate the traveling direction of the elevator in the car.	DAC	●
Door-Close Button Response Light	The Door-Close button light is on when the Door-Close button is pressed.	DCR	●
Door-Open Button Response Light	The Door-Open button light is on when the Door-Open button is pressed.	DOL	●
Elevator Counter/Timer	Record the times and duration the elevator runs	ECT	●
Telephone for External Liaison	A phone having access to the local call network for external liaison.	ETEL	○
Interface of Telephone for External Liaison	Interface of the phone for external liaison.	ETI	●
Fire Emergency Return-Completed	When FER Operation is completed, a "CP" signal is output.	FER-CP *4	○
Flashing Hall Button Light	When the elevator stops at a landing and starts to open the doors, the Hall Call Button light of the same direction flashes to remind passengers that the car has arrived; when the doors are closed completely, the button light goes off.	FHBL	●
Hall Indicator Energy Saving	The dot-matrix display of the hall will display information with low brightness when there is no call, and with normal brightness when the call button of the floor is pressed, thus saving energy and extending the service life.	HIES *6	○
Interphone	In emergency, persons in the car or on the car top can use this device to communicate with persons in the machine room or monitoring room.	ITP	●
TV Cable (Analog)	The cable for video camera (analog) in the car.	ITV-A *5	○
ITV Cable (Digital)	The cable for video camera (digital) in the car.	ITV-D *5	○
Overload Indication in Car	The Overload Indication is on when the elevator is overloaded.	OLHL	●

Notes:

*1. Applicable to the max. floor height between two stops is 10 m or less.

*2. This feature is optional for standard elevators. Elevators with this feature do not mean that they meet the requirements for fire elevators (GB26465-2011).

*3. Select AMS or MBS.

*4. Configured with FER at the same time.

*5. Select ITV-A or ITV-D.

*6. If a single-button is available, not applicable to HCBK, DDOP or HIES.

Enjoy Your Ride Up and Down at Home



 **上海三菱电梯有限公司**
SHANGHAI MITSUBISHI ELEVATOR CO.,LTD.

